



Your Source for Packaging  
and Product Protection

Caps | Plugs | Wraps | Edge Liners | Netting | Tubing | Containers





# Pack It. Protect It.

*We offer a wide line of packaging solutions that are durable, attractive and reusable. From plastic tubing and tube ends to plastic netting sheets and sleeves to containers and edge liners, we can provide you with the perfect packaging, storage, shipping and display solution for your product.*



## **ClearView® Tubing – Open end**

Series TRO ClearView® plastic tubing prominently displays and promotes your product. Featuring two open ends, it is available in standard or heavy wall and a variety of lengths and diameters.



## **ClearView® Tubing – Closed end**

Series TRC ClearView® plastic tubing features a clear closed end. Choose from standard wall or heavy wall for added protection. Available in a variety of lengths and diameters.



## **Tube-in-Tube**

Tube-in-tube allows maximum viewing through the tube and all the way around, with no seam. Use a full color insert and protect it from the tube contents with the second tube slid over the insert.



## **Square Tubes**

Square tubes are a unique alternative to traditional tubing packages. They also resist rolling during shipment, keeping your product stable while in transit.



## **Tube Ends**

Choose from hundreds of tube ends specially designed to fit our tubing. From flexible vinyl and rigid plastic caps to uniquely shaped hanger caps, we have the tube ends to meet your needs.

# Display It. Store It.



## Industrial Sleeve-Web® Netting

Standard, light or heavy-duty netting available. Each provides low-cost protection against physical damage to exterior surfaces, with heavy-duty giving you an extra measure of protection for valuable precision components.



## Bottle-Web™

Series CBW is tough yet flexible netting that provides surface and impact protection for bottles of any shape and size. The diamond mesh design allows for protection in a wide range of strengths, stretch capabilities and elasticity to satisfy all your protection needs.



## Flat Sheet Netting

Flexible PM Series flat sheet netting provides excellent protection from impact or abrasion damage. Use as a separator for stacked parts during storage, handling and shipment, or as a protective wrap for bulky items.



## Containers

Choose from one- or two-piece containers that can be used for a multitude of applications including airtight or vented. Available in a variety of transparent or opaque colors ideal for packaging, shipping and display.



## Edge Liners

A convenient method for covering sharp edges on any application to protect delicate edging and finishes during shipment.



## Caps and Plugs

We offer a complete line of caps and plugs designed to protect any product for virtually any application. Available in a variety of colors, shapes and sizes.



# TUBING

## TRO SERIES *Standard Wall Open End Tubing*



**MATERIAL:** PETG  
**COLOR:** Natural (Clear)

Pad printing available.  
All tubes available in lengths up to 48" custom cut to desired length.  
Please call customer service for available lengths.

Caplugs No.	Dimensions						Standard Carton		
	Inside Diameter		Wall Thickness		Length		Shipping Wt. (Approx.)		No. of Pieces
	in	mm	in	mm	in	mm	lbs	kgs	
TRO-187-012-48.000	0.210	5.33	0.012	0.30	48.00	1219.20	19	8.6	900
TRO-250-012-48.000	0.299	7.59	0.012	0.30	48.00	1219.20	15	6.8	500
TRO-375-012-48.000	0.421	10.69	0.012	0.30	48.00	1219.20	20	9.1	500
TRO-500-012-48.000	0.548	13.92	0.012	0.30	48.00	1219.20	16	7.3	300
TRO-625-014-48.000	0.714	18.14	0.014	0.36	48.00	1219.20	15	6.8	180
TRO-750-015-48.000	0.808	20.52	0.015	0.38	48.00	1219.20	19	8.6	200
TRO-875-017-48.000	0.942	23.93	0.017	0.43	48.00	1219.20	13	5.9	100
TRO-937-017-48.000	1.026	26.06	0.017	0.43	48.00	1219.20	19	8.6	100
TRO-1000-017-48.000	1.097	27.86	0.017	0.43	48.00	1219.20	15	6.8	100
TRO-1125-018-48.000	1.211	30.76	0.018	0.46	48.00	1219.20	20	9.1	120
TRO-1187-020-48.000	1.283	32.59	0.020	0.51	48.00	1219.20	22	9.9	120
TRO-1250-018-48.000	1.363	34.62	0.018	0.46	48.00	1219.20	18	8.2	90
TRO-1375-018-48.000	1.438	36.53	0.018	0.46	48.00	1219.20	18	8.2	90
TRO-1500-018-48.000	1.644	41.76	0.018	0.46	48.00	1219.20	21	9.5	90
TRO-1625-020-48.000	1.710	43.43	0.020	0.51	48.00	1219.20	21	9.5	80
TRO-1750-020-48.000	1.820	46.23	0.020	0.51	48.00	1219.20	20	9.1	70
TRO-1875-020-48.000	1.960	49.78	0.020	0.51	48.00	1219.20	21	9.5	70
TRO-2000-020-48.000	2.070	52.58	0.020	0.51	48.00	1219.20	19	8.6	60
TRO-2250-020-48.000	2.320	58.93	0.020	0.51	48.00	1219.20	21	9.5	60
TRO-2500-020-48.000	2.570	65.28	0.020	0.51	48.00	1219.20	20	9.1	50
TRO-2625-020-48.000	2.710	68.83	0.020	0.51	48.00	1219.20	21	9.5	50
TRO-2750-020-48.000	2.790	70.87	0.020	0.51	48.00	1219.20	13	5.9	21
TRO-3000-025-48.000	3.085	78.36	0.025	0.64	48.00	1219.20	15	6.8	36
TRO-3500-025-48.000	3.570	90.68	0.025	0.64	48.00	1219.20	15	6.8	15

## TRO SERIES *Heavy Wall Open End Tubing*



**MATERIAL:** PETG  
**COLOR:** Natural (Clear)

Pad printing available.  
All tubes available in lengths up to 48" custom cut to desired length.  
Please call customer service for available lengths.

Caplugs No.	Dimensions						Standard Carton		
	Inside Diameter		Wall Thickness		Length		Shipping Wt. (Approx.)		No. of Pieces
	in	mm	in	mm	in	mm	lbs	kgs	
TRO-187-020-48.000	0.194	4.93	0.020	0.51	48.00	1219.20	20	9.1	600
TRO-250-022-48.000	0.279	7.09	0.022	0.56	48.00	1219.20	20	9.1	400
TRO-375-022-48.000	0.401	10.19	0.022	0.56	48.00	1219.20	18	8.2	250
TRO-500-022-48.000	0.528	13.41	0.022	0.56	48.00	1219.20	19	8.6	200
TRO-625-022-48.000	0.698	17.73	0.022	0.56	48.00	1219.20	19	8.6	150
TRO-750-022-48.000	0.794	20.17	0.022	0.56	48.00	1219.20	19	8.6	140
TRO-875-022-48.000	0.932	23.67	0.022	0.56	48.00	1219.20	17	7.7	100
TRO-937-022-48.000	1.016	25.81	0.022	0.56	48.00	1219.20	19	8.6	100
TRO-1000-022-48.000	1.087	27.61	0.022	0.56	48.00	1219.20	19	8.6	100
TRO-1125-022-48.000	1.203	30.56	0.022	0.56	48.00	1219.20	21	9.5	100
TRO-1187-025-48.000	1.273	32.33	0.025	0.64	48.00	1219.20	27	12.2	120
TRO-1250-022-48.000	1.355	34.42	0.022	0.56	48.00	1219.20	21	9.5	90
TRO-1375-022-48.000	1.430	36.32	0.022	0.56	48.00	1219.20	20	9.1	80
TRO-1500-022-48.000	1.636	41.55	0.022	0.56	48.00	1219.20	17	7.7	60
TRO-1625-028-48.000	1.694	43.03	0.028	0.71	48.00	1219.20	19	8.6	50
TRO-1750-028-48.000	1.804	45.82	0.028	0.71	48.00	1219.20	20	9.1	50
TRO-1875-025-48.000	1.950	49.53	0.025	0.64	48.00	1219.20	19	8.6	50
TRO-2000-028-48.000	2.054	52.17	0.028	0.71	48.00	1219.20	18	8.2	40
TRO-2250-028-48.000	2.304	58.52	0.028	0.71	48.00	1219.20	16	7.3	30
TRO-2500-028-48.000	2.554	64.87	0.028	0.71	48.00	1219.20	17	7.7	30
TRO-2610-030-48.000	2.610	66.29	0.030	0.76	48.00	1219.20	21	9.5	28
TRO-2625-030-48.000	2.690	68.33	0.030	0.76	48.00	1219.20	18	8.2	28
TRO-2670-030-48.000	2.670	67.82	0.030	0.76	48.00	1219.20	22	9.9	28
TRO-2730-030-48.000	2.730	69.34	0.030	0.76	48.00	1219.20	22	9.9	28
TRO-2750-028-48.000	2.774	70.46	0.028	0.71	48.00	1219.20	13	5.9	21
TRO-3000-032-48.000	3.071	78.00	0.032	0.81	48.00	1219.20	15	6.8	36
TRO-3500-032-48.000	3.556	90.32	0.032	0.81	48.00	1219.20	15	8.1	15
TRO-3580-030-48.000	3.580	90.93	0.030	0.76	48.00	1219.20	17	7.7	15
TRO-3640-030-48.000	3.640	92.46	0.030	0.76	48.00	1219.20	18	8.2	15
TRO-3700-030-48.000	3.700	93.98	0.030	0.76	48.00	1219.20	18	8.2	15

## TRC SERIES *Standard Wall Closed End Tubing*



**MATERIAL:** PETG  
**COLOR:** Natural (Clear)

Pad printing available.  
All tubes available in lengths up to 18" custom cut to desired length.  
Please call customer service for available lengths.

Caplugs No.	Dimensions				Standard Carton		
	Inside Diameter		Wall Thickness		Shipping Wt. (Approx.)		No. of Pieces
	in	mm	in	mm	lbs	kgs	
TRC-500-012	0.548	13.92	0.012	0.30	Call Customer Service		
TRC-625-014	0.714	18.14	0.014	0.36	Call Customer Service		
TRC-750-015	0.808	20.52	0.015	0.38	Call Customer Service		
TRC-875-017	0.942	23.93	0.017	0.43	Call Customer Service		
TRC-937-017	1.026	26.06	0.017	0.43	Call Customer Service		
TRC-1000-017	1.097	27.86	0.017	0.43	Call Customer Service		
TRC-1125-018	1.211	30.76	0.018	0.46	Call Customer Service		
TRC-1187-020	1.273	32.59	0.020	0.51	Call Customer Service		
TRC-1250-018	1.363	34.62	0.018	0.46	Call Customer Service		
TRC-1375-018	1.438	36.53	0.018	0.46	Call Customer Service		
TRC-1500-018	1.644	41.76	0.018	0.46	Call Customer Service		
TRC-1625-020	1.710	43.43	0.020	0.51	Call Customer Service		
TRC-1750-020	1.820	46.23	0.020	0.51	Call Customer Service		
TRC-1875-020	1.960	49.78	0.020	0.51	Call Customer Service		
TRC-2000-020	2.070	52.58	0.020	0.51	Call Customer Service		
TRC-2250-020	2.320	58.93	0.020	0.51	Call Customer Service		
TRC-2500-020	2.570	65.28	0.020	0.51	Call Customer Service		
TRC-2625-020	2.710	68.83	0.020	0.51	Call Customer Service		
TRC-2750-020	2.790	70.87	0.020	0.51	Call Customer Service		
TRC-3000-025	3.085	78.36	0.025	0.64	Call Customer Service		
TRC-3500-025	3.570	90.68	0.025	0.64	Call Customer Service		

## TRC SERIES *Heavy Wall Closed End Tubing*



**MATERIAL:** PETG  
**COLOR:** Natural (Clear)

Pad printing available.  
All tubes available in lengths up to 18" custom cut to desired length.  
Please call customer service for available lengths.

Caplugs No.	Dimensions				Standard Carton		
	Inside Diameter		Wall Thickness		Shipping Wt. (Approx.)		No. of Pieces
	in	mm	in	mm	lbs	kgs	
TRC-500-022	0.528	13.41	0.022	0.56	Call Customer Service		
TRC-625-022	0.698	17.73	0.022	0.56	Call Customer Service		
TRC-750-022	0.794	20.17	0.022	0.56	Call Customer Service		
TRC-875-022	0.932	23.67	0.022	0.56	Call Customer Service		
TRC-937-022	1.016	25.81	0.022	0.56	Call Customer Service		
TRC-1000-022	1.087	27.61	0.022	0.56	Call Customer Service		
TRC-1125-022	1.203	30.56	0.022	0.56	Call Customer Service		
TRC-1187-025	1.273	32.33	0.025	0.64	Call Customer Service		
TRC-1250-022	1.355	34.42	0.022	0.56	Call Customer Service		
TRC-1375-022	1.430	36.32	0.022	0.56	Call Customer Service		
TRC-1500-022	1.636	41.55	0.022	0.56	Call Customer Service		
TRC-1625-028	1.694	43.03	0.028	0.71	Call Customer Service		
TRC-1750-028	1.804	45.82	0.028	0.71	Call Customer Service		
TRC-1875-025	1.950	49.53	0.025	0.64	Call Customer Service		
TRC-2000-028	2.054	52.17	0.028	0.71	Call Customer Service		
TRC-2250-028	2.304	58.52	0.028	0.71	Call Customer Service		
TRC-2500-028	2.554	64.87	0.028	0.71	Call Customer Service		
TRC-2625-030	2.690	68.33	0.030	0.76	Call Customer Service		
TRC-2750-028	2.774	70.46	0.028	0.71	Call Customer Service		
TRC-3000-032	3.071	78.00	0.032	0.81	Call Customer Service		
TRC-3500-032	3.556	90.32	0.032	0.81	Call Customer Service		

**NEW**

## TSO AND TSC SERIES *Square Tubing*



**MATERIAL:** PETG  
**COLOR:** Natural (Clear)  
Pad printing available.  
All tubes available in lengths up to 48" custom cut to desired length.  
Please call customer service for available lengths.

Square tubes are a unique alternative to traditional tubing packages. They resist rolling during shipment to keep your product stable during transit and their square shape makes them ideal for stacking. The tubes are available in open and closed end designs. We have a wide variety of sizes, styles and colors available. To finish off your package, we can pad print your company name, logo, the product name and more right on the tube. Contact a customer service representative at 1-888-CAPLUGS for more information.

**NEW**

## TUBE-IN-TUBE *Specialized Packaging*



**MATERIAL:** PETG  
**COLOR:** Natural (Clear)  
Pad printing available.

Tube-in-tube allows maximum viewing through the tube and all the way around, with no seam. Use a full color insert and protect it from the tube contents with the second tube slid over the insert. Contact a customer service representative at 1-888-CAPLUGS for more information.

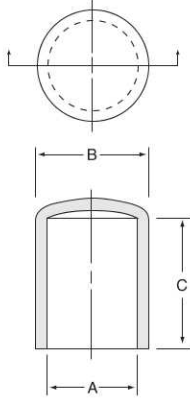


# TUBE ENDS

## VC SERIES *Round Vinyl Caps*



**MATERIAL:** Vinyl  
**COLOR\*:** Black, Red  
**Standard Color Options:** White, Brown, Orange, Green, Gray, Blue, Yellow

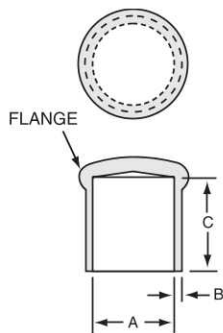


Caplugs No.	Fits Tube Size***	Dimensions						Standard Carton			
		A		B		C*		Shipping Wt. (Approx.)		No. of Pieces	Mini Pak Quantity
		in	mm	in	mm	in	mm	lbs	kgs		
VC-234-8	TRO/TRC 187	0.234	5.94	0.32	8.13	0.500	12.70	7	3.1	5000	1000
VC-234-16	TRO/TRC 187	0.234	5.94	0.32	8.13	1.000	25.40	13	5.8	5000	1000
VC-312-8	TRO/TRC 250	0.312	7.93	0.42	10.67	0.500	12.70	11	4.9	5000	1000
VC-312-16	TRO/TRC 250	0.312	7.93	0.42	10.67	1.000	25.40	17	7.6	5000	1000
VC-437-8	TRO/TRC 375	0.437	11.10	0.56	14.22	0.500	12.70	17	7.6	5000	1000
VC-437-16	TRO/TRC 375	0.437	11.10	0.56	14.22	1.000	25.40	15	6.8	2500	500
VC-562-8	TRO/TRC 500	0.562	14.28	0.69	17.53	0.500	12.70	10	4.5	2500	500
VC-562-16	TRO/TRC 500	0.562	14.28	0.69	17.53	1.000	25.40	18	8.1	2500	500
VC-750-8	TRO/TRC 625	0.750	19.05	0.88	22.35	0.500	12.70	16	7.2	2500	500
VC-750-16	TRO/TRC 625	0.750	19.05	0.88	22.35	1.000	25.40	11	4.9	1000	200
VC-812-8	TRO/TRC 750	0.812	20.63	0.94	23.88	0.500	12.70	16	7.2	2500	500
VC-812-16	TRO/TRC 750	0.812	20.63	0.94	23.88	1.000	25.40	11	4.9	1000	200
VC-937-8	TRO/TRC 875	0.937	23.80	1.08	27.43	0.500	12.70	19	8.6	2500	500
VC-937-16	TRO/TRC 875	0.937	23.80	1.08	27.43	1.000	25.40	13	5.8	1000	200
VC-1062-16	TRO/TRC 937	1.062	26.97	1.20	30.48	1.000	25.40	19	8.6	1200	240
VC-1125-16	TRO/TRC 1000	1.125	28.57	1.27	32.26	1.000	25.40	20	9.0	1200	240
VC-1250-16	TRO/TRC 1125	1.250	31.75	1.39	35.31	1.000	25.40	19	8.6	1000	200
VC-1375-16	TRO/TRC 1250	1.375	34.92	1.52	38.61	1.000	25.40	17	7.7	750	150
VC-1437-16	TRO/TRC 1375	1.437	36.50	1.58	40.06	1.000	25.40	15	6.8	750	150
VC-1500-16	TRO/TRC 1375	1.500	38.10	1.64	41.66	1.000	25.40	18	8.1	750	150
VC-1625-16	TRO/TRC 1500	1.625	41.27	1.77	44.96	1.000	25.40	20	9.0	750	150
VC-1687-16	TRO/TRC 1625	1.687	42.84	1.83	46.48	1.000	25.40	19	8.6	700	140
VC-1875-16	TRO/TRC 1750	1.875	47.62	2.02	26.97	1.000	25.40	19	8.6	600	120
VC-2000-16	TRO/TRC 1875	2.000	50.80	2.14	54.36	1.000	25.40	20	9.0	600	120
VC-2125-16	TRO/TRC 2000	2.125	53.98	2.275	57.79	1.000	25.40	17	7.6	500	100
VC-2375-16	TRO/TRC 2250	2.375	59.56	2.525	64.14	1.000	25.40	20	9.0	400	80
VC-2625-16	TRO/TRC 2500	2.625	66.67	2.775	70.49	1.000	25.40	23	10.4	400	80
VC-2750-16	TRO/TRC 2625	2.750	69.85	2.910	73.91	1.000	25.40	19	8.6	300	60
VC-2875-16	TRO/TRC 2750	2.875	73.03	3.035	77.09	1.000	25.40	13	5.8	250	50
VC-3125-16	TRO/TRC 3000	3.125	79.37	3.285	83.44	1.000	25.40	15	6.8	250	N/A
VC-3625-18	TRO/TRC 3500	3.625	92.08	3.785	96.14	1.125	28.58	15	6.8	200	N/A

## VCF SERIES *Vinyl Caps with Flanges*



**MATERIAL:** Vinyl  
**COLOR\*:** Black  
**Standard Color Options:** White, Brown, Orange, Green, Gray, Blue, Yellow, Red



Caplugs No.	Fits Tube Size***	Dimensions						Standard Carton			
		A		B		C*		Shipping Wt. (Approx.)		No. of Pieces	Mini Pak Quantity
		in	mm	in	mm	in	mm	lbs	kgs		
VCF-234-8	TRO/TRC 187	0.234	5.94	0.045	1.14	0.500	12.70	5	2.3	5000	1000
VCF-234-16	TRO/TRC 187	0.234	5.94	0.045	1.14	1.000	25.40	10	4.5	5000	1000
VCF-312-8	TRO/TRC 250	0.312	7.92	0.055	1.40	0.500	12.70	7	3.2	5000	1000
VCF-312-16	TRO/TRC 250	0.312	7.92	0.055	1.40	1.000	25.40	21	9.5	5000	1000
VCF-437-8	TRO/TRC 375	0.437	11.09	0.060	1.52	0.500	12.70	11	5.0	5000	1000
VCF-437-16	TRO/TRC 375	0.437	11.09	0.060	1.52	1.000	25.40	13	5.9	2500	500
VCF-562-8	TRO/TRC 500	0.562	14.27	0.065	1.65	0.500	12.70	9	4.1	2500	500
VCF-562-16	TRO/TRC 500	0.562	14.27	0.065	1.65	1.000	25.40	15	6.8	2500	500
VCF-750-8	TRO/TRC 625	0.750	19.05	0.065	1.65	0.500	12.70	13	5.9	2500	500
VCF-750-16	TRO/TRC 625	0.750	19.05	0.065	1.65	1.000	25.40	9	4.1	1000	200
VCF-812-8	TRO/TRC 750	0.812	20.62	0.065	1.65	0.500	12.70	14	6.4	2500	500
VCF-812-16	TRO/TRC 750	0.812	20.62	0.065	1.65	1.000	25.40	10	4.5	1000	200
VCF-937-8	TRO/TRC 875	0.937	23.79	0.070	1.79	0.500	12.70	18	8.2	2500	500
VCF-937-16	TRO/TRC 875	0.937	23.79	0.070	1.79	1.000	25.40	11	5.0	1000	200
VCF-1062-16	TRO/TRC 937	1.062	26.97	0.070	1.79	1.000	25.40	19	8.6	1200	240
VCF-1125-16	TRO/TRC 1000	1.125	28.57	0.070	1.79	1.000	25.40	22	10.0	1200	240
VCF-1250-16	TRO/TRC 1125	1.250	31.75	0.070	1.79	1.000	25.40	18	8.2	1000	200
VCF-1375-16	TRO/TRC 1250	1.375	34.92	0.070	1.79	1.000	25.40	16	7.3	800	160
VCF-1500-16	TRO/TRC 1625	1.500	38.10	0.070	1.79	1.000	25.40	16	7.3	750	150
VCF-1625-16	TRO/TRC 1750	1.625	41.27	0.070	1.79	1.000	25.40	19	8.6	750	150
VCF-1687-16	TRO/TRC 1625	1.687	42.84	0.070	1.79	1.000	25.40	20	9.1	700	140
VCF-1875-16	TRO/TRC 1750	1.875	47.62	0.070	1.79	1.000	25.40	20	9.1	600	120
VCF-2000-16	TRO/TRC 1875	2.000	50.80	0.070	1.79	1.000	25.40	21	9.5	600	120
VCF-2125-16	TRO/TRC 2000	2.125	53.98	0.070	1.79	1.000	25.40	15	6.8	500	100
VCF-2375-16	TRO/TRC 2250	2.375	60.33	0.070	1.79	1.000	25.40	25	6.8	400	80
VCF-2625-16	TRO/TRC 2500	2.625	66.68	0.070	1.79	1.000	25.40	17	7.7	400	80
VCF-2750-16	TRO/TRC 2625	2.750	69.85	0.070	1.79	1.000	25.40	17	7.7	300	60

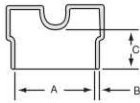
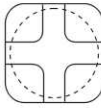
\*Note: Additional colors and lengths available. Contact a customer service representative at 1-888-CAPPLUGS for more information.  
 \*\*\*See pages 4 and 5 for corresponding tubes.

# TUBE ENDS

## VSE SERIES Vinyl Anti-Roll End Caps



**MATERIAL:** Vinyl  
**COLOR\*:** Black  
**Standard Color Options:**  
 White, Brown, Orange, Green,  
 Gray, Blue, Yellow, Red

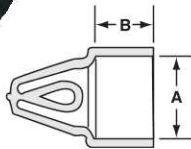


Caplugs No.	Fits Tube Size***	Dimensions						Standard Carton			
		A		B		C		Shipping Wt. (Approx.)		No. of Pieces	Mini Pak**
		in	mm	in	mm	in	mm	lbs	kgs		Quantity
VSE-312-8	TRO/TRC 250	0.312	7.92	0.040	1.02	0.500	12.70	18	8.1	5000	1000
VSE-406-8	TRO/TRC 375	0.406	10.31	0.040	1.02	0.500	12.70	15	6.8	5000	1000
VSE-531-8	TRO/TRC 500	0.531	13.48	0.040	1.02	0.500	12.70	9	4.1	4000	800
VSE-625-8	N/A	0.625	15.88	0.050	1.27	0.500	12.70	16	7.3	1500	300
VSE-687-8	N/A	0.687	17.45	0.050	1.27	0.500	12.70	22	9.9	2500	500
VSE-750-12	TRO/TRC 625	0.750	19.05	0.050	1.27	0.750	19.05	13	5.9	1500	300
VSE-796-12	TRO/TRC 750	0.796	20.21	0.050	1.27	0.750	19.05	12	5.4	1500	300
VSE-812-12	N/A	0.812	20.62	0.050	1.27	0.750	19.10	15	6.8	1000	200
VSE-937-16	TRO/TRC 875	0.937	23.80	0.050	1.27	1.000	25.40	18	8.1	1000	200
VSE-1000-16	N/A	1.000	25.40	0.060	1.52	1.000	25.40	22	9.9	1000	200
VSE-1062-1	TRO/TRC 937	1.062	26.97	0.060	1.52	1.000	25.40	18	8.1	900	180
VSE-1125-16	TRO/TRC 1000	1.125	28.57	0.060	1.52	1.000	25.40	16	7.3	750	150
VSE-1313-16	TRO/TRC 1250	1.313	33.35	0.060	1.52	1.000	25.40	19	8.6	500	100
VSE-1375-16	N/A	1.375	34.93	0.060	1.52	1.000	25.40	20	9.1	600	120
VSE-1625-24	TRO/TRC 1500	1.625	41.28	0.060	1.52	1.500	38.10	18	8.1	400	80
VSE-2125-24	TRO/TRC 2000	2.125	53.98	0.070	1.78	1.500	38.10	18	8.1	200	40
VSE-2500-24	N/A	2.500	63.50	0.070	1.80	1.500	38.10	27	12.2	250	50

## VHC SERIES Vinyl Hanger Caps



**MATERIAL:** Vinyl  
**COLOR\*:** Black  
**Standard Color Options:**  
 White, Brown, Orange, Green,  
 Gray, Blue, Yellow, Red

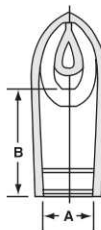


Caplugs No.	Fits Tube Size***	Dimensions				Standard Carton			
		A		B		Shipping Wt. (Approx.)		No. of Pieces	Mini Pak**
		in	mm	in	mm	lbs	kgs		Quantity
VHC-531-16	TRO/TRC 500	0.531	13.49	1.000	25.4	26	11.8	2500	500
VHC-812-16	TRO/TRC 750	0.812	20.62	1.000	25.4	24	10.9	1500	300
VHC-1062-16	TRO/TRC 937	1.062	26.97	1.000	25.4	24	10.9	1200	240
VHC-1375-16	TRO/TRC 1250	1.375	34.93	1.000	25.4	33	15.0	1000	200
VHC-1437-16	TRO/TRC 1375	1.437	36.49	1.000	25.4	25	11.3	750	150
VHC-1500-16	N/A	1.500	38.10	1.000	25.4	25	11.3	750	150
VHC-1625-16	TRO/TRC 1500	1.625	41.28	1.000	25.4	34	15.4	750	150
VHC-2000-16	TRO/TRC 1875	2.000	50.80	1.000	25.4	31	14.1	600	120
VHC-2500-16	N/A	2.500	63.50	1.000	25.4	37	16.8	500	100
VHC-3000-16	N/A	3.000	76.20	1.000	25.4	24	10.9	250	50

## VHR SERIES Vinyl Hanger Caps (round)



**MATERIAL:** Vinyl  
**COLOR\*:** Black  
**Standard Color Options:**  
 White, Brown, Orange, Green,  
 Gray, Blue, Yellow, Red



Caplugs No.	Fits Tube Size***	Dimensions				Standard Carton			
		A		B		Shipping Wt. (Approx.)		No. of Pieces	Mini Pak**
		in	mm	in	mm	lbs	kgs		Quantity
VHR-625-8	N/A	0.625	15.87	.500	12.70	25	11.3	2500	500
VHR-750-12	TRO/TRC 625	0.750	19.05	.750	19.05	25	11.3	2000	400
VHR-875-12	TRO/TRC 750	0.875	22.22	.750	19.05	25	11.3	1000	200
VHR-950-24	N/A	0.950	24.13	1.50	38.10	18	8.1	500	100

## NEW ANTI-ROLL TUBE ENDS



**MATERIAL:** Low Density Polyethylene  
**COLOR\*:** Black

Our anti-roll caps will keep your round tubing stable during transit. These tube ends are durable and flat, making them ideal for stacking. Contact a customer service representative at 1-888-CAPLUGS for more information.

\*Note: Additional colors available. Contact a customer service representative at 1-888-CAPLUGS for more information.

\*\*Mini Paks are available only in the standard color(s).

\*\*\*See pages 4 and 5 for corresponding tubes.



# TUBE ENDS

## TE SERIES

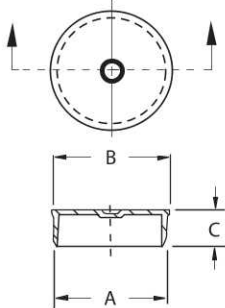
Tube End Plugs for ClearView® Tubing



**MATERIAL:** Low Density Polyethylene  
**COLOR\*:** Black

Available in a wide variety of colors

**Pad printing:** Available on all tube end plugs



Caplugs No.	Fits Tube Size***	Dimensions						Standard Carton			
		A		B		C		Shipping Wt. (Approx.)		No. of Pieces	Mini Pak**
		in	mm	in	mm	in	mm	lbs	kgs		Quantity
TE-500	TRO/TRC-500	0.553	14.04	0.600	15.23	0.320	8.12	5	2.2	5,000	1,000
TE-625	TRO/TRC-625	0.719	18.26	0.770	19.55	0.320	8.12	9	4.0	5,000	1,000
TE-750	TRO/TRC-750	0.813	20.64	0.860	21.84	0.320	8.12	11	4.8	5,000	1,000
TE-875	TRO/TRC-875	0.949	24.10	1.000	25.39	0.320	8.12	13	6.0	5,000	1,000
TE-937	TRO/TRC-937	1.034	26.25	1.060	26.91	0.380	9.65	14	6.1	5,000	1,000
TE-1000	TRO/TRC-1000	1.105	28.06	1.140	28.94	0.380	9.65	15	6.9	5,000	1,000
TE-1125	TRO/TRC-1125	1.221	31.00	1.270	32.25	0.380	9.65	11	4.9	2,500	500
TE-1187	TRO/TRC-1187	1.293	32.83	1.350	34.28	0.380	9.65	12	5.3	2,500	500
TE-1250	TRO/TRC-1250	1.373	34.86	1.420	36.05	0.380	9.65	12	5.2	2,250	450
TE-1375	TRO/TRC-1375	1.448	36.76	1.500	38.09	0.380	9.65	11	5.0	2,000	400
TE-1500	TRO/TRC-1500	1.657	42.07	1.720	43.67	0.440	11.17	10	4.6	1,500	300
TE-1625	TRO/TRC-1625	1.724	43.77	1.780	45.19	0.440	11.17	11	5.0	1,500	300
TE-1750	TRO/TRC-1750	1.834	46.57	1.890	47.99	0.440	11.17	10	4.6	1,250	250
TE-1875	TRO/TRC-1875	1.975	50.15	2.080	52.81	0.440	11.17	9	4.1	1,000	200
TE-2000	TRO/TRC-2000	2.085	52.94	2.190	55.60	0.440	11.17	10	4.6	1,000	200
TE-2250	TRO/TRC-2250	2.329	59.13	2.440	61.95	0.500	12.70	9	4.0	750	150
TE-2500	TRO/TRC-2500	2.580	65.51	2.700	68.55	0.500	12.70	9	4.1	650	130
TE-2625	TRO/TRC-2625	2.720	69.06	2.840	72.11	0.500	12.70	9	4.2	600	120
TE-2750	TRO/TRC-2750	2.800	71.09	2.920	74.14	0.500	12.70	10	4.4	600	120
TE-3000	TRO/TRC-3000	3.095	78.58	3.220	81.76	0.500	12.70	10	4.3	500	100
TE-3500	TRO/TRC-3500	3.585	91.02	3.700	93.94	0.560	14.22	9	3.9	350	70

## TE-TAB SERIES

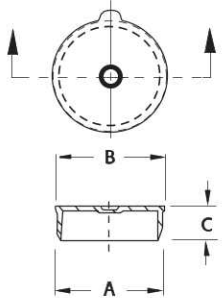
Tube End Plugs with Tabs for ClearView® Tubing



**MATERIAL:** Low Density Polyethylene  
**COLOR\*:** Black

Available in a wide variety of colors

**Pad printing:** Available on all tube end plugs



Caplugs No.	Fits Tube Size***	Dimensions						Standard Carton			
		A		B		C		Shipping Wt. (Approx.)		No. of Pieces	Mini Pak**
		in	mm	in	mm	in	mm	lbs	kgs		Quantity
TE-500-TAB	TRO/TRC-500	0.553	14.04	0.600	15.23	0.320	8.12	5	2.2	5,000	1,000
TE-625-TAB	TRO/TRC-625	0.719	18.26	0.770	19.55	0.320	8.12	9	4.0	5,000	1,000
TE-750-TAB	TRO/TRC-750	0.813	20.64	0.860	21.84	0.320	8.12	11	4.8	5,000	1,000
TE-875-TAB	TRO/TRC-875	0.949	24.10	1.000	25.39	0.320	8.12	13	6.0	5,000	1,000
TE-937-TAB	TRO/TRC-937	1.034	26.25	1.060	26.91	0.380	9.65	14	6.1	5,000	1,000
TE-1000-TAB	TRO/TRC-1000	1.105	28.06	1.140	28.94	0.380	9.65	15	6.9	5,000	1,000
TE-1125-TAB	TRO/TRC-1125	1.221	31.00	1.270	32.25	0.380	9.65	11	4.9	2,500	500
TE-1187-TAB	TRO/TRC-1187	1.293	32.83	1.350	34.28	0.380	9.65	12	5.3	2,500	500
TE-1250-TAB	TRO/TRC-1250	1.373	34.86	1.420	36.05	0.380	9.65	12	5.2	2,250	450
TE-1375-TAB	TRO/TRC-1375	1.448	36.76	1.500	38.09	0.380	9.65	11	5.0	2,000	400
TE-1500-TAB	TRO/TRC-1500	1.657	42.07	1.720	43.67	0.440	11.17	10	4.6	1,500	300
TE-1625-TAB	TRO/TRC-1625	1.724	43.77	1.780	45.19	0.440	11.17	11	5.0	1,500	300
TE-1750-TAB	TRO/TRC-1750	1.834	46.57	1.890	47.99	0.440	11.17	10	4.6	1,250	250
TE-1875-TAB	TRO/TRC-1875	1.975	50.15	2.080	52.81	0.440	11.17	9	4.1	1,000	200
TE-2000-TAB	TRO/TRC-2000	2.085	52.94	2.190	55.60	0.440	11.17	10	4.6	1,000	200
TE-2250-TAB	TRO/TRC-2250	2.329	59.13	2.440	61.95	0.500	12.70	9	4.0	750	150
TE-2500-TAB	TRO/TRC-2500	2.580	65.51	2.700	68.55	0.500	12.70	9	4.1	650	130
TE-2625-TAB	TRO/TRC-2625	2.720	69.06	2.840	72.11	0.500	12.70	9	4.2	600	120
TE-2750-TAB	TRO/TRC-2750	2.800	71.09	2.920	74.14	0.500	12.70	10	4.4	600	120
TE-3000-TAB	TRO/TRC-3000	3.095	78.58	3.220	81.76	0.500	12.70	10	4.3	500	100
TE-3500-TAB	TRO/TRC-3500	3.585	91.02	3.700	93.94	0.560	14.22	9	3.9	350	70

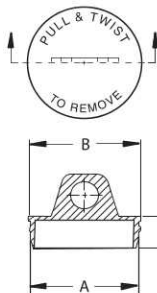
## TE-HNG SERIES

Tube End Plugs for ClearView® Tubing



**MATERIAL:** Low Density Polyethylene  
**COLOR\*:** Black

Available in several sizes and colors



Caplugs No.	Fits Tube Size***	Dimensions						Standard Carton			
		A		B		C		Shipping Wt. (Approx.)		No. of Pieces	Mini Pak**
		mm	in	mm	in	mm	in	lbs	kgs		Quantity
TE-1187-HNG	TRO/TRC-1187	1.304	33.11	1.330	33.77	0.380	9.65	12	5.3	3,000	300

\*Note: Additional sizes and colors available. Contact a customer service representative at 1-888-CAPPLUGS for more information.

\*\*Mini Paks are available only in the standard color(s).

\*\*\*See pages 4 and 5 for corresponding tubes.

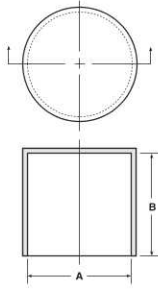


# TUBE ENDS

## SC SERIES Sleeve Caps for Tube Ends



**MATERIAL:** Low Density Polyethylene  
**COLOR\*\*:** Red

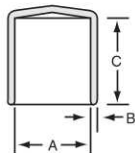


Caplugs No.	Fits Tube Size ***	Dimensions				Standard Carton			
		A		B		Shipping Wt. (Approx.)		No. of Pieces	Mini Pak**
		in	mm	in	mm	lbs	kgs		Quantity
SC-7/16-8	TRO/TRC 375	0.438	11.11	0.50	12.70	6	2.7	5000	1000
SC-9/16-9	TRO/TRC 500	0.563	14.29	0.56	14.22	9	4.0	5000	1000
SC-3/4	TRO/TRC 625	0.750	19.05	0.88	22.35	17	7.6	5000	1000
SC-13/16	TRO/TRC 750	0.813	20.64	0.88	22.35	18	8.1	5000	1000
SC-7/8	TRO/TRC 750	0.875	22.23	0.88	22.35	20	9.0	5000	1000
SC-1	TRO/TRC 875	1.000	25.40	1.00	25.40	15	6.8	2500	500
SC-1-1/16	TRO/TRC 937	1.063	26.99	1.00	25.40	18	8.1	2500	500
SC-1-1/8	TRO/TRC 1000	1.125	28.58	1.00	25.40	15	6.8	2500	500
SC-1-1/4	TRO/TRC 1125	1.250	31.75	1.00	25.40	19	8.6	2000	400
SC-1-1/2	TRO/TRC 1375	1.500	38.10	1.00	25.40	10	4.5	1000	200
SC-1-3/4	TRO/TRC 1625	1.750	44.45	1.00	25.40	13	5.8	1000	200
SC-1-7/8	TRO/TRC 1750	1.875	47.63	1.00	25.40	13	5.8	1000	200
SC-2-3/8	TRO/TRC 2250	2.375	60.33	0.88	22.35	9	4.0	500	100
SC-2-5/8	TRO/TRC 2500	2.625	66.68	1.00	25.40	13	5.8	500	100
SC-2-3/4	TRO/TRC 2625	2.750	69.85	1.00	25.40	13	5.8	500	100
SC-3-5/8	TRO/TRC 3500	3.625	92.08	1.38	35.05	11	4.9	250	50

## VSC SERIES Vinyl Square End Caps



**MATERIAL:** Vinyl  
**COLOR:** Black  
**Standard Color Options:**  
White, Brown, Orange, Green, Gray, Blue, Yellow, Red



Caplugs No.	Dimensions						Standard Carton			
	A		B		C		Shipping Wt. (Approx.)		No. of Pieces	Mini Pak**
	in	mm	in	mm	in	mm	lbs	kgs		Quantity
VSC 375-8	0.375	9.53	0.06	1.52	0.5	12.7	9	4.1	2500	500
VSC 375-16	0.375	9.53	0.06	1.52	1.0	25.4	12	5.4	2500	500
VSC 437-8	0.437	11.1	0.06	1.52	0.5	12.7	20	9.1	5000	1000
VSC 437-16	0.437	11.1	0.06	1.52	1.0	25.4	27	12.2	5000	1000
VSC 500-8	0.500	12.7	0.065	1.65	0.5	12.7	13	5.9	3000	600
VSC 500-16	0.500	12.7	0.065	1.65	1.0	25.4	15	6.8	2000	400
VSC 625-8	0.625	15.87	0.065	1.65	0.5	12.7	14	6.4	2500	500
VSC 625-16	0.625	15.87	0.065	1.65	1.0	25.4	15	6.8	1500	300
VSC 750-8	0.750	19.05	0.065	1.65	0.5	12.7	13	5.9	2000	400
VSC 750-16	0.750	19.05	0.065	1.65	1.0	25.4	12	5.4	1000	200
VSC 1000-8	1.000	25.4	0.065	1.65	0.5	12.7	13	5.9	1500	300
VSC 1000-16	1.000	25.4	0.065	1.65	1.0	25.4	16	7.3	900	180
VSC 1250-8	1.250	31.75	0.065	1.65	0.5	12.7	13	5.9	1000	200
VSC 1250-16	1.250	31.75	0.065	1.65	1.0	25.4	15	6.8	700	140
VSC 1500-8	1.500	38.1	0.065	1.65	0.5	12.7	16	7.3	900	180
VSC 1500-16	1.500	38.1	0.065	1.65	1.0	25.4	17	7.7	600	120
VSC 1625-8	1.625	41.28	0.07	1.78	0.5	12.7	33	15	1000	200
VSC 1625-16	1.625	41.28	0.07	1.78	1.0	25.4	18	8.1	500	100
VSC 1750-8	1.750	44.45	0.065	1.65	0.5	12.7	15	6.8	700	140
VSC 1750-16	1.750	44.45	0.065	1.65	1.0	25.4	17	7.7	500	100
VSC 1875-8	1.875	47.62	0.065	1.65	0.5	12.7	14	6.4	600	120
VSC 1875-16	1.875	47.62	0.065	1.65	1.0	25.4	14	6.4	400	80
VSC 2000-8	2.000	50.8	0.065	1.65	0.5	12.7	16	7.3	600	120
VSC 2000-16	2.000	50.8	0.065	1.65	1.0	25.4	17	7.7	400	80

\*Note: Additional sizes and colors available. Contact a customer service representative at 1-888-CAPLUGS for more information.

\*\*Mini Paks are available only in the standard color(s).

\*\*\*See pages 4 and 5 for corresponding tubes.

# NETTING

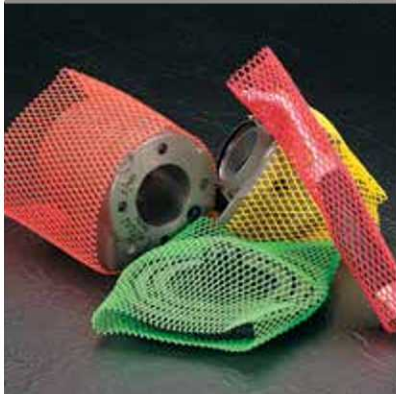
## SW SERIES *Light Duty Tubular Sleeve-Web® Netting*



**MATERIAL:** Low Density Polyethylene  
**COLOR:** See chart

Caplugs No.	To Fit Outside Diameter			Color Code	Standard Coil Spool Size 24"x15.25" 33-38lb (15-17kg) Shipping Wt.		Mini Coil Spool Size N/A 7-8lb (3-4kg) Shipping Wt.	
	in	mm	Coil					
			ft		m	ft	m	
SW-075-22	3/4 to 2	19.05 - 50.80	Yellow	1500	460	300	90.0	
SW-125-22	1 1/4 to 3	31.75 - 76.20	Blue	1000	300	200	60.0	
SW-200-22	2 to 4	50.80 - 101.60	Red	800	240	160	50.0	
SW-400-22	4 to 8	101.60 - 203.21	Blue	600	180	120	35.0	
SW-600-22	6 to 12	152.40 - 304.80	Natural	200	60	40	12.2	

## SW SERIES *Standard Duty Tubular Sleeve-Web® Netting*



**MATERIAL:** Low Density Polyethylene  
**COLOR:** See chart

Caplugs No.	To Fit Outside Diameter			Color Code	Standard Coil Spool Size 24"x15.25" 42-48lb (19-22kg) Shipping Wt.		Mini Coil Spool Size N/A 9-11lb (4-5kg) Shipping Wt.	
	in	mm	Coil					
			ft		m	ft	m	
SW-03	1/4 to 3/8	6.35 - 9.53	Orange	3500	1066	700	213.0	
SW-04	3/8 to 3/4	9.53 - 19.05	Green	3000	914	600	180.0	
SW-05	1/2 to 1	12.70 - 25.40	Blue	2750	840	550	170.0	
SW-10	1 to 1 1/2	25.40 - 38.10	Red	1700	520	340	100.0	
SW-15	1 1/2 to 2	38.10 - 50.80	Black	900	270	180	55.0	
SW-20	2 to 2 1/2	50.80 - 63.50	White	800	240	160	50.0	
SW-25	2 1/2 to 3	63.50 - 76.20	Yellow	600	180	120	35.0	
SW-30	3 to 4	76.20 - 101.60	Green	450	140	90	30.0	
SW-40	4 to 5	101.60 - 127.00	Orange	350	110	70	20.0	
SW-50	5 to 6	127.00 - 152.41	Natural	250	80	50	15.2	
SW-64	6 1/4 to 7 1/2	158.76 - 190.51	Blue	250	80	50	15.2	
SW-75	7 1/2 to 9	190.51 - 228.61	Red	200	60	40	12.2	
SW-90	9 to 10	228.61 - 254.01	Yellow	200	60	40	12.2	

## SW SERIES *Heavy Duty Tubular Sleeve-Web® Netting*



**MATERIAL:** Low Density Polyethylene  
**COLOR:** See chart

Caplugs No.	To Fit Outside Diameter			Color Code	Standard Coil Spool Size 24"x15.25" 33-38lb (15-17kg) Shipping Wt.		Mini Coil Spool Size N/A 7-8lb (3-4kg) Shipping Wt.	
	in	mm	Coil					
			ft		m	ft	m	
SW-050-66	1/2	12.70	White	2000	610	400	120	
SW-075-66	3/4	19.05	Orange	1500	460	300	90	
SW-100-66	1	25.40	Black	1200	370	240	75	
SW-125-66	1 1/4	31.75	Green	1000	300	200	60	
SW-150-66	1 1/2	38.10	Yellow	800	240	160	50	
SW-175-66	1 3/4	44.45	Grey	600	180	120	35	
SW-200-66	2	50.80	Blue	500	150	100	30	
SW-250-66	2 1/2	63.50	Red	500	150	100	30	
SW-300-66	3	76.20	Natural	450	135	90	27	



## PM SERIES Flat Sheet Netting



**MATERIAL:** Low Density Polyethylene  
**COLOR:** See chart

		Dimensions				Packaging			
		Mesh Thickness		Strands		Standard Coil		Shipping Wt. (Approx.)	
Caplugs No.	Color Code	in	mm	Per inch	Per cm	in x ft	cm x m	lbs	kgs
PM-7007-18	Yellow	.07	1.78	7	2.8	18 x 125	45.7 x 38.0	30	13.50
PM-7005-20	Blue	.07	1.78	5	2.0	20 x 150	50.8 x 45.6	23	10.35
PM-7004-24	Red	.07	1.78	4	1.6	24 x 125	61.0 x 38.0	28	12.60

## CSW SERIES Sleeve-Web® Netting



**MATERIAL:** Low Density Polyethylene  
**COLOR:** Natural/Clear

		Dimensions				Packaging			
		To Fit Cylinder Diameter		Length		Standard Carton		Shipping Wt. (Approx.)	
Caplugs No.		in	mm	in	mm	lbs	kgs	No. of Pieces	Mini Pak Quantity
CSW-4271-36		9	225.61	36	914.4	25	11.25	40	N/A
CSW-4265-6		9	225.61	6	152.4	23	10.35	210	50
CSW-4279-6		12 1/2	317.51	6	152.4	16	7.20	250	50
CSW-4281-25		7	177.81	25	635.0	25	11.25	50	N/A

## CBW SERIES Cut Bottle-Web™ Netting



**MATERIAL:** Low Density Polyethylene  
**COLOR:** Black  
**STANDARD COLOR OPTIONS:** Natural, Red, Green

		Dimensions				Standard Carton			
		To Fit Bottle Diameter		Length		Shipping Wt. (Approx.)		No. of Pieces	Mini Pak Quantity
Caplugs No.		in	mm	in	mm	lbs	kgs		
CBW-4293-7.0		3-5	76.2-127	7	177.8	7	3.2	400	N/A
CBW-4293-10.0		3-5	76.2-127	10	254.0	6	2.7	275	N/A

# EDGE LINERS AND CONTAINERS

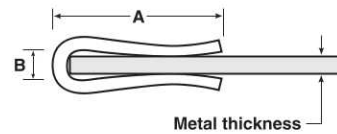
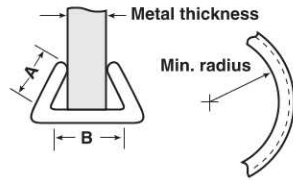
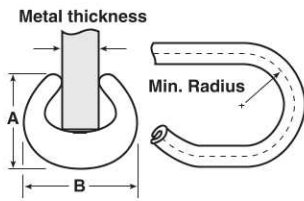
## EGL SERIES *Edge Liners for Sheet Metal and Pipe Ends*



Caplugs No.	Dimensions							Standard Carton					
	Metal Thickness		A		B		Minimum Bend Radius	Shipping Wt. (Approx.)		Length†	Mini Pak Quantity		
	in	mm	in	mm	in	mm		lbs	kgs			ft	m
EGL-11-2	.05-.081	1.27 - 2.06	.15	3.81	.17	4.32	.75	19.05	3	1.3	500	152	N/A
EGL-11-3	.07-.121	1.78 - 3.07	.16	4.06	.22	5.59	1.00	25.40	6	2.7	500	152	N/A
EGL-12-1/4	.13-.283	3.30 - 7.19	.20	5.08	.28	7.11	2.00	50.80	7	3.1	150	46	N/A
EGL-12-1/2	.25-.506	6.35 - 12.85	.30	7.62	.50	12.70	2.50	63.50	8	3.6	125	38	N/A
EGL-12-3/4	.38-.759	9.65 - 19.28	.35	8.89	.75	19.05	3.00	76.20	8	3.6	100	31	N/A
EGL-22-4*	.01-.120	.25 - 3.05	.65	16.51	.14	3.56	—	—	15	6.8	500	152	N/A
EGL-22-6*	.11-.182	2.79 - 4.62	1.00	25.40	.22	5.59	—	—	22	9.9	250	76	N/A
EGL-22-12*	.03-.190	0.76 - 4.83	1.92	48.77	.23	5.84	—	—	12	5.4	400*	123*	N/A

†100 pcs cut in 4 ft. lengths or 100 pcs cut in 1.23 m lengths

MATERIAL: High Density Polyethylene  
COLOR\*\*: Black

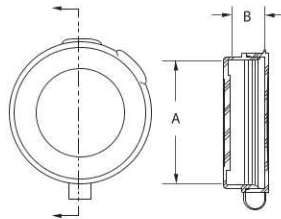


## CVC SERIES *Hinged Containers*



MATERIAL: Polypropylene  
COLOR\*: Natural

Caplugs No.	Dimensions				Standard Carton			
	in	A	mm	B	Shipping Wt. (Approx.)		No. of Pieces	Mini Pak Quantity
					lbs	kgs		
CVC-1.25-1/2-HL	1.020		25.91	.510	12.95	8.6	2500	500
CVC-1.50-1/2-HL	1.400		35.55	.530	13.46	9.5	2500	500
CVC-1.50-1-1/2-HL	1.400		35.55	1.450	36.82	6.1	1000	200
CVC-1.50-2-1/2-HL	1.400		35.55	2.440	61.95	7.3	700	140
CVC-2.00-1/2-TC	1.810		45.97	.530	13.46	8.1	1000	200
CVC-2.00-1-HL	1.850		46.99	.850	21.60	10.4	1000	200
CVC-2.00-3-1/4-HL	1.904		48.36	3.120	79.25	7.9	300	60



### Customize your container

We can engrave or pad print the container with your company name, logo, web site, an image, or even instructions.

\*Note: Additional colors and materials available. Contact a customer service representative at 1-888-CAPPLUGS for more information.  
\*\*Also stocked in natural.



# EDGE LINERS AND CONTAINERS

## CVV SERIES Vials



**MATERIAL:** Polypropylene  
**VIAL COLOR:** Natural  
**VIAL CAP COLOR:** White

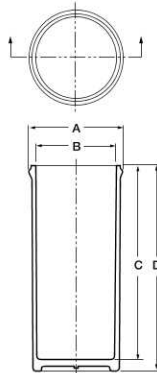
Caplugs No.	DRAM Size	Fluid Oz.	Dimensions								Packaging	
			A		B		C		D		Carton Quantity	Mini Pak Quantity
			In	mm	In	mm	In	mm	In	mm		
CVV-35ASM	3.5	.44	.975	24.77	.830	21.08	1.400	35.56	1.520	38.61	1500	300
CVV-50ASM	5	.63	.966	24.54	.830	21.08	2.000	50.80	2.120	53.85	1500	300
CVV-70ASM	7	.88	1.116	28.35	.980	24.89	2.050	52.07	2.170	55.12	900	180
CVV-90ASM	9	1.13	1.116	28.35	.980	24.89	2.610	66.29	2.730	69.34	900	180
CVV-120ASM	12	1.50	1.308	33.22	1.160	29.46	2.650	67.31	2.760	70.10	550	110
CVV-150ASM	15	1.88	1.300	33.02	1.160	29.46	3.270	83.06	3.380	85.85	550	110
CVV-200ASM	20	2.50	1.668	42.37	1.520	38.61	2.730	69.34	2.850	72.39	350	70
CVV-250ASM	25	3.13	1.671	42.44	1.520	38.61	3.260	82.80	3.390	86.11	350	70
CVV-400ASM	40	5.00	2.039	51.79	1.890	48.01	3.230	82.04	3.350	85.09	175	35
CVV-500ASM	50	6.25	2.026	51.46	1.890	48.01	4.200	106.68	4.320	109.73	175	35

### CAP Dimensions

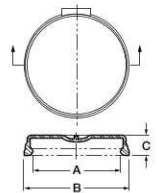
Caplugs No.	A		B		C	
	In	mm	In	mm	In	mm
CVV-35ASM & CVV-50ASM	.920	23.37	1.090	27.69	.210	5.33
CVV-70ASM & CVV-90ASM	1.080	27.43	1.240	31.50	.210	5.33
CVV-120ASM & CVV-150ASM	1.250	31.75	1.420	36.07	.210	5.33
CVV-200ASM & CVV-250ASM	1.605	40.77	1.780	45.21	.210	5.33
CVV-400ASM & CVV-500ASM	1.980	50.29	2.150	54.61	.210	5.33



**MATERIAL:** Polypropylene  
**COLOR:** Red, Orange, Blue, Purple, Yellow



**MATERIAL:** Polypropylene  
**METALLIC COLOR:** Red, Copper and Silver



\*Note: Additional colors and materials available. Contact a customer service representative at 1-888-CAPPLUGS for more information.

# ClearView® Clear Plastic Tubing

What's your application?



## Industrial Applications

Our line of heavy wall ClearView® tubing is designed to provide the rugged protection needed to package machined parts, large drill bits and a variety of other industrial components.



## Storage Applications

From nuts and bolts to saw blades and screwdrivers, ClearView® tubing keeps everything organized for storage and clearly visible for quick identification.



## Packaging Applications

For eye-catching displays, anything goes in ClearView® tubing, making it ideal for retail and advertising specialties.



## Shipping/Mailing Applications

ClearView® tubing is strong enough to withstand the rigors of shipping, keeping your important documents and other items safe in transit. ClearView tubes are lighter than paper tubes yet durable, making them the right choice for all of your direct mail, advertising and promotional campaigns.



# Custom Design Capabilities

When it comes to meeting your packaging needs, we've got everything covered! That's because, in addition to housing the world's largest stock of plastic and vinyl caps, plugs, wraps, tubes, edge liners and nettings, we also have the tools and experience to offer extensive custom design capabilities. We can accommodate your need for a special design, shape or color. Whether you simply need a non-stock size, a variation of an existing style or a totally new design, we can provide the perfect custom solution for your product and packaging protection.

For more information on our custom capabilities, contact a customer service representative at 1-888-CAPLUGS.



**Different Shapes**



**Design Changes**



**Functionality Modifications**



**Printed Tubes**



**Printed Tube Ends**



**Part Alterations**

# Full Product Line

More Than 15,000 Catalog Parts.  
450,000,000 Parts Inventoried and Ready To Ship.



**Caps**



**Plugs**



**Tubing**



**Wraps**



**Edge Liners**



**Netting**



**Containers**



**Bushings**

ISO 9001  
IATF 16949  
ISO 14001  
ISO 13485  
REGISTERED



1.888.CAPLUGS • [www.caplugs.com/packaging-netting](http://www.caplugs.com/packaging-netting)



Leading companies.  
Leading solutions.